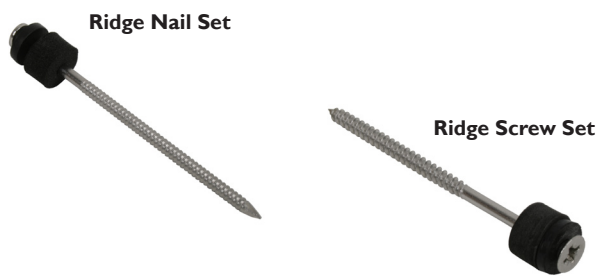


**Ridge Nail & Screw Sets**



- *Stainless steel annular ring nails and stainless steel screws complete with foam and neoprene washers*
- *Used to fix ridge tiles*
- *Stainless steel makes them corrosion resistant and maintenance free*
- *The neoprene washer provides a seal and the foam protects the ridge from the seal and the nail/screw head*

Code	Description	Size	Material	Bag Quantity
RPRN100	Ridge Nail Set	100mm x 3.75mm	Stainless Steel	7
RPRS100	Ridge Screw Set	100mm x 4.00mm	Stainless Steel	100

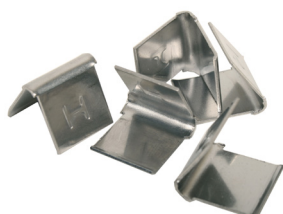
**Lead Dome Sets**



- *Also known as Lead Dot Sets*
- *Fixing pack comprising lead dome, solid brass recess pattern screw cup, slotted countersunk brass screw and nylon washer*
- *Often used for vertical cladding*

Code	Screw Size	Finish	Bag Quantity
RLDS020	8 x 1 1/4"	Lead & Brass	20

**Hall Clips**



- *Lead flashing fixing clips*
- *1 bag of 50 clips fixes up to 20 linear metres of lead flashing*
- *Will secure any flashing chase from 6-18mm*
- *Grips lead firmly in place allowing the flashing to be dressed before pointing to give you a professional finish*

Code	Size	Material	Bag Quantity
RLHC050	For lead chases 6-18mm	Stainless Steel	50

**uPVC Hinged Washers & Roof Fitting Sets**



- *uPVC hinged clear roofing washers ideal for use with bolts or screws on plastic roof sheeting*
- *The cover protects the head of the screw and ensures the fixing is watertight*
- *Sets comprise a hinged clear uPVC roofing washer and a round head BZP recessed woodscrew*
- *Sets available with a spacer to both support the screw and fill the area between the crown of the corrugated roof and the timber purlin*

Code	Description	Spacer	Washer Size	Screw Size	Bag Quantity
RPFW	uPVC Hinged Washer	-	M6 x 20mm	-	100
RPFS	Roof Fitting Set	-	M6 x 20mm	8 x 2"	10
RPFSSP	Roof Fitting Set	18mm Spacer	M6 x 20mm	8 x 2"	10